



**ktl**  
the key to training & learning

KTL Ltd established for 22 years, is a private training provider specialising in delivering Fashion and Textiles qualifications to both employed and unemployed individuals. KTL also delivers training in textiles workshops of several prisons across the East Midlands. KTL is a 'Showcase Centre of Excellence' for the awarding body ABC Awards and holds the Matrix Standard - a unique quality standard for organisations to assess and measure their advice and support services.

KTL specialises in supporting people who have experienced drug, alcohol, mental health and offending problems as well as anyone who is employed/unemployed. You will receive support to achieve your aims whilst obtaining nationally recognised qualifications.

All of our support is provided free of charge. We can help you learn new skills, overcome boredom and improve your employment prospects. You don't need any previous experience, all we ask is that you are committed, honest and open minded to try something new which has the potential to make a big difference to you!

## HOW TO ACCESS...

We are located in the city centre of Derby, approximately a 10 minute walk from the bus station and Council House.

To access our services you need to be:

- Aged 16 to 24
- NEET or at risk of becoming NEET
- Be willing to attend and participate

If you are undecided please call us for advice, to arrange a taster session or informal visit.

You can self refer to KTL or if you have a support worker they can make the referral on your behalf.

**01332 477 677**

- 1 From the Council House, walk on Derwent Street crossing over the river
- 2 Go through the underpass
- 3 You will now see a big blue office building and Browns Builders - Clarke Street is on your left
- 4 Walk to the end of Clarke Street and you will find Derwent Business Centre.



FIND US

**UNIT 3 DERWENT BUSINESS CENTRE**  
**CLARKE STREET**  
**DERBY DE1 2BU**  
**01332 477 677**

CONTACT US

**ARE YOU 16 - 24?**

**Not In...**

**Employment?**

**Education?**

**Training?**

D2N1 Your Time is a programme funded by:



**European Union**  
European  
Social Fund

Delivered in partnership with:



**D2N1 Your Time**



**European Union**  
European  
Social Fund

**Learn New Skills**  
Fashion & Textiles,  
Graphic Design,  
English & Maths



D2N1 Your Time @ KTL

# FASHION & TEXTILES

FASHION & TEXTILES

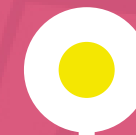
GRAPHIC DESIGN

ENGLISH

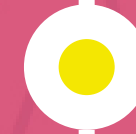
MATHS



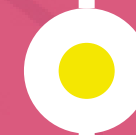
# HOW WE WORK WITH YOU



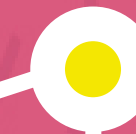
We initially assess your needs and what you want to achieve.



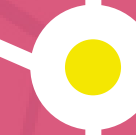
We help you to make a plan and help you to work out what is best for you.



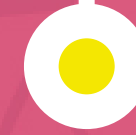
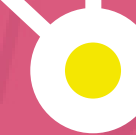
Whilst attending KTL you need to do at least 20 hours per week but we can be flexible over the days/times you attend.



You will study for nationally recognised qualifications, all delivered from our training academy in the city centre.



You can do a single course or a number of courses, the choice is yours!

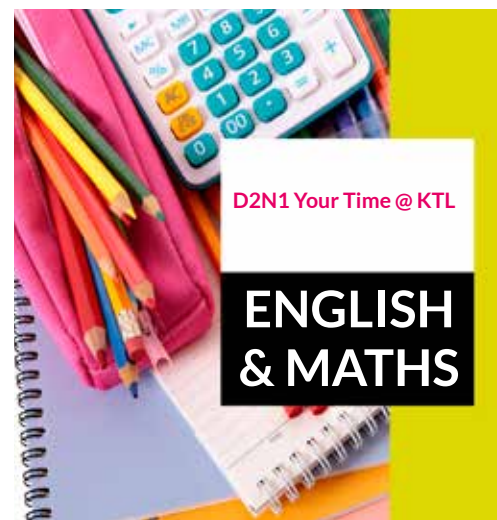


At the end of your time with KTL we will work to help support and guide you to progressing to get to where you want to be.

We are part of the D2N1 'Your Time' programme offered to 16 to 24 year olds by Dimensons Training Solutions. You will be given the opportunity to gain a qualification, get your life back on track and develop your confidence and skills whilst attending with us.

Our training lasts between 6 weeks and 6 months depending on what you want to study. You will need to attend 4 days per week from 9.30am until 3.30pm. If you have childcare or similar factors we can make the start and end times flexible to suit your circumstances.

We will give you a great learning experience that is fun. Why not visit us to find out more? If you are undecided we offer taster sessions.



D2N1 Your Time @ KTL

# ENGLISH & MATHS

## D2N1 Your Time @ KTL

- Learn to sew
- Make soft toys, clothes, bags and more
- Learn about graphic design
- 3D printing and painting
- Improve your English and Maths

## D2N1 Your Time @ KTL



# GRAPHIC DESIGN